

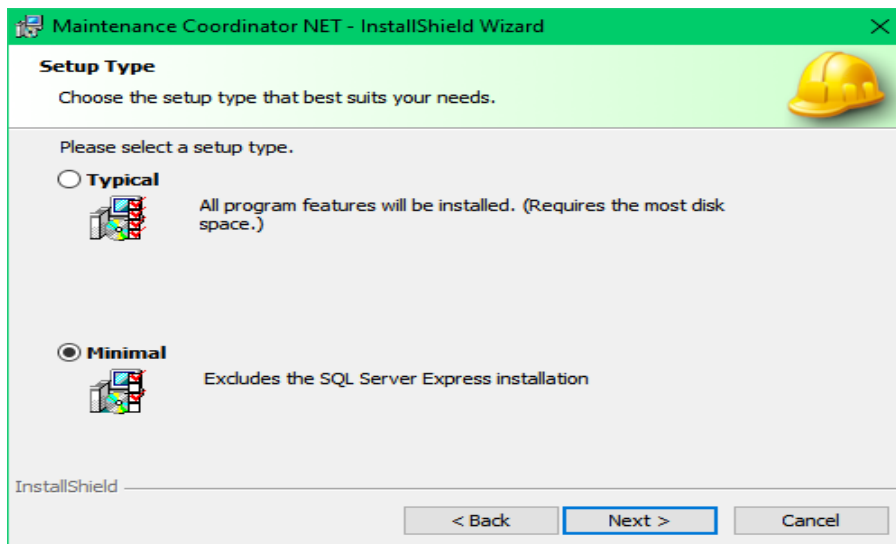
Installing PM or Maintenance Coordinator NET v8

1. If you do not have a SQL server instance in your computer please install the SQL SERVER Express 12 before installing the maintenance coordinator software, to set up see [_SQL SERVER EXPRESS.pdf](#)

<https://www.microsoft.com/en-us/download/details.aspx?id=29062>

2. Download and install either PM Coordinator v8 NET or Maintenance Coordinator v8 NET(SQL)

<https://www.simssofttech.com/copy-of-software-manuals-downloads>



Select **Minimal** when installing.

3. See MC NET - Fixing Database Startup Connections.pdf to set database connections