

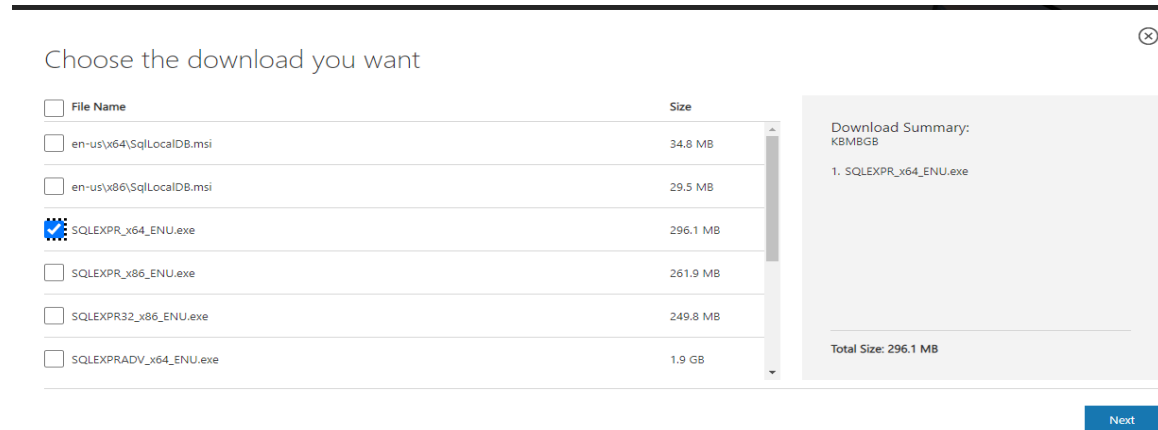


Installing PM or Maintenance Coordinator NET v8

1. If you do not have an SQL server instance in your computer, please install the SQL SERVER Express 12 before installing the maintenance coordinator software, to set up see MC-PM NET - Setting Database Startup Connections .pdf

Download [SQLEXPRT_x64_ENU.exe](#)

<https://www.microsoft.com/en-us/download/details.aspx?id=43351>



Choose the download you want

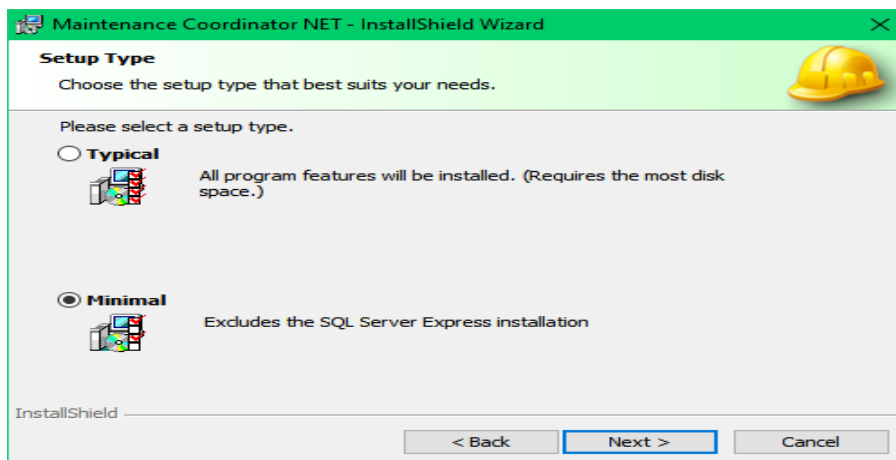
File Name	Size
<input type="checkbox"/> en-us\x64\SqlLocalDB.msi	34.8 MB
<input type="checkbox"/> en-us\x86\SqlLocalDB.msi	29.5 MB
<input checked="" type="checkbox"/> SQLEXPRT_x64_ENU.exe	296.1 MB
<input type="checkbox"/> SQLEXPRT_x86_ENU.exe	261.9 MB
<input type="checkbox"/> SQLEXPRT32_x86_ENU.exe	249.8 MB
<input type="checkbox"/> SQLEXPRTADV_x64_ENU.exe	1.9 GB

Download Summary:
KB/MB/GB
1. SQLEXPRT_x64_ENU.exe
Total Size: 296.1 MB

Next

2. Download and install either **PM Coordinator v8 NET** or **Maintenance Coordinator v8 NET(SQL)**

<https://www.simssofttech.com/copy-of-software-manuals-downloads>



Select **Minimal** when installing.

3. See MC NET - MC-PM NET - Setting Database Startup Connections.pdf