

MC and PMC v9 NET Software Updates Feb 22, 2024

MC9.ES.Windows.9.10.5.7, MC9.Windows.9.10.5.10, PM9.ES.Windows.9.2.3.6, and **PM9.Windows.9.2.3.7** contains the fix for the cut long texts in work order print preview and detail adjustments for the 1-page print preview.

(MC9.Windows.9.10.5.5, MC9.ES.Windows.9.10.5.3, PM9.ES.Windows.9.2.3.2, PM9.Windows.9.2.3.2)

- Bug fix for the Date DBNull error Fixed the bug for the "Date Column Error" when launching the maintenance coordinator (bug is present in all versions)
- Added work order settings to limit the display of the completion notes and details.
- added the completion notes when previewing a completed work order.
- Renamed the "Generate by Date" to "Generate next by Date Range."

The screenshot shows the 'Work Orders Settings' application window. The 'Document Print Elements' tab is selected, showing a list of items to be printed on recurring work order types. A 'Use Optimal Settings for 1 Page' button is visible. The list includes:

Item	# of Lines
<input checked="" type="checkbox"/> Company Logo	
<input checked="" type="checkbox"/> Comments Information	
<input checked="" type="checkbox"/> Safety Instructions	
<input checked="" type="checkbox"/> Task (Work to be performed) Instructions	
<input checked="" type="checkbox"/> Property Information	
<input checked="" type="checkbox"/> Material Lists (Recording information)	1
<input checked="" type="checkbox"/> Completion Information (Sign-offs)	1
<input checked="" type="checkbox"/> Materials Needed	
<input checked="" type="checkbox"/> Recording of Completion Steps	1
<input checked="" type="checkbox"/> Limit Displayed Materials (6 rows)	
<input checked="" type="checkbox"/> Limit Displayed Instructions	
<input checked="" type="checkbox"/> Limit Sub Asset Display (Show 2 Sub Asset Names)	
<input checked="" type="checkbox"/> Show Completion Notes and Details	

MC9 Only

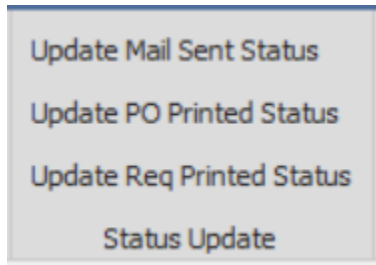
- Reverted some of the changes I made for the upcoming "Bulk Regenerate" to prevent bugs in the working work order regeneration.
- Added a new generation functionality "Bulk Generate Work Order Until Selected End Date" to let the users bulk regenerate their work orders until their desired date.

MC9.Windows.9.10.5.4 and **MC9.Windows.ES.9.10.5.2** contain the following changes.

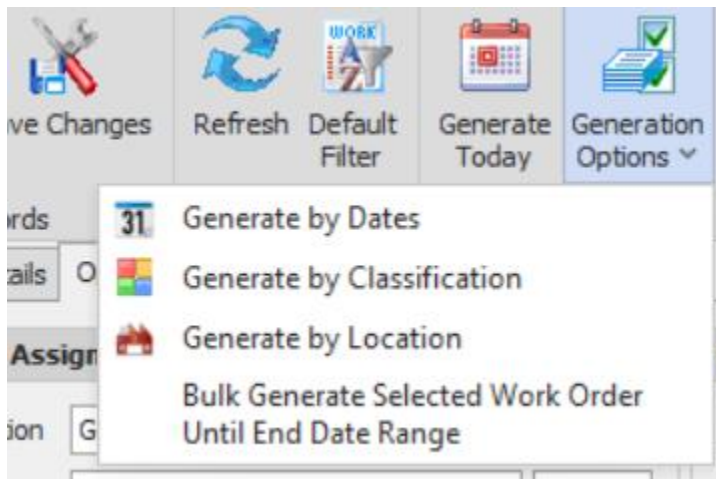
Purchasing and Receiving

- When Printing a PO, the POPrinted will be marked to true.

- When Printing a Requisition, the POPrinted will be marked to true.
- When sending an approval, the SentEmail will be marked to true.



- Add buttons for manual updating of the column status to **true if it is false** and **false if it is already true**.
 - **Update Mail Sent Status** is for the SentEmail column.
 - **Update PO Printed Status** is for the POPrinted column.
 - **Update Req Printed Status** is for the ReqPrinted column.



Notes: We cannot mix the "Bulk Generate Selected Work Order Until End Date Range" to "Generate by Dates" because it will impose inconvenience to the users.

Example, I have **Work-X that I want to regenerate only until Jan 3, Work-Y only until Jan 5, and Work-Z only until Jan 7**. When selecting the "Generate by Dates" with the new proposed functionality and selecting a date range with the end date of jan-10, **Work orders X,Y, and Z and all the other work orders within the selected range will generate until jan-10 instead of the desired dates and work orders.**

MC9 ES 9.10.5.1

- Auto add and remove related parts.

- Work Order Regeneration Restriction Settings
- Work Order Cost Report
- Some UI adjustments to fit the translated texts.
- .Net Framework Update to 4.8

PM9

- Work Order Regeneration Restriction Settings
- .Net Framework Update to 4.8
- Could not add the Auto add/remove of related parts and WO cost report since PM coordinator does not have the **parts and inventory module**.

PM9 ES

- Work Order Regeneration Restriction Settings
- Some UI adjustments to fit the translated texts.
- .Net Framework Update to 4.8
- Could not add the Auto add/remove of related parts and WO cost report since PM coordinator does not have the **parts and inventory module**.

MC9.10.5.3 contains the following fixes.

- Fixed a bug in the "Asset Cost Report" where the report will produce an error when using the AttachDBFilename type of db connection.
- Fixed a bug in the "Asset Cost Report" where other assets associated with the part will also show when assigning "more than 1 Equipment used on".
- Renamed the "Allow Work Order Generation" to "Allow Work Order Regeneration" in the user permissions for uniformity in the Main Setting
- Removed a feature in the database setting where using "Windows Authentication" will set the "User Instance" to True automatically and when using "SQL Authentication" will set the "User Instance" to False automatically since there are scenarios where some "Windows Authentication" are needed to have a false user instance and some "SQL Authentication" to have a true user instance.

MC9.10.5.2 which contains the following changes:

- Added the Regeneration Setting for the Machine Level in the Main Settings ("Allow Work Order Regeneration" is Disabled by Default)



Main Settings

Company Information Auto Email Settings New Email Notices **Other Settings**

Reports

Conserve Ink on Reports

Scheduler

Use Pagination for Scheduler Data

Allow Work Order Regeneration



Email Settings

Spell Checking Dictionaries Folder

C:\Maintenance Coordinator NET 9\Dictionaries\

Browse

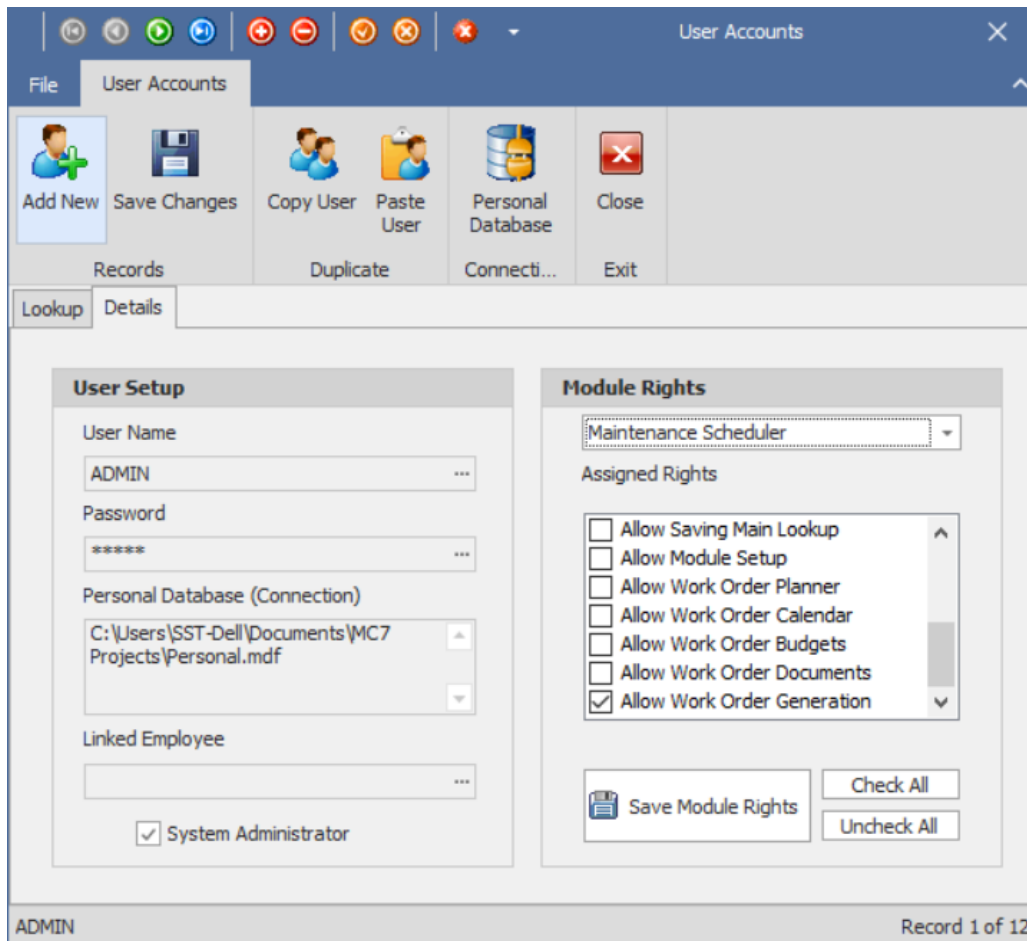


OK



Cancel

- Added the Regeneration Setting for the user Level ("Allow Work Order Generation" is Disabled by Default)



- Manual Work Order Generation and Regeneration will now not run unless both settings are enabled to prevent work order duplicates and database deadlocks within the network.